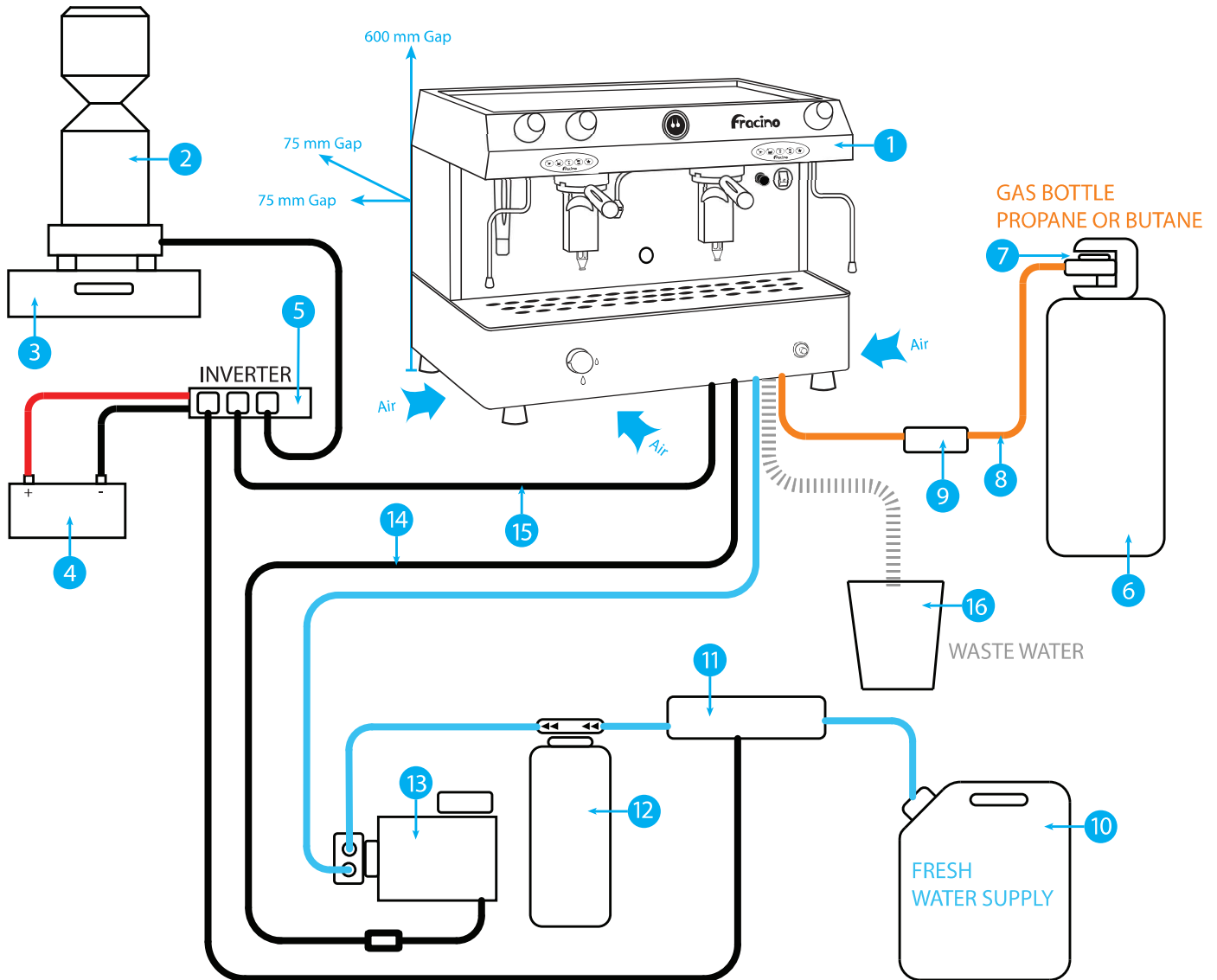





LPG Installation and User Manual Supplement

This supplement is to be used in conjunction with the standard Installation and User manual supplied with new LPG machines, the installation of the appliance must be performed by qualified engineers.

Overview - LPG

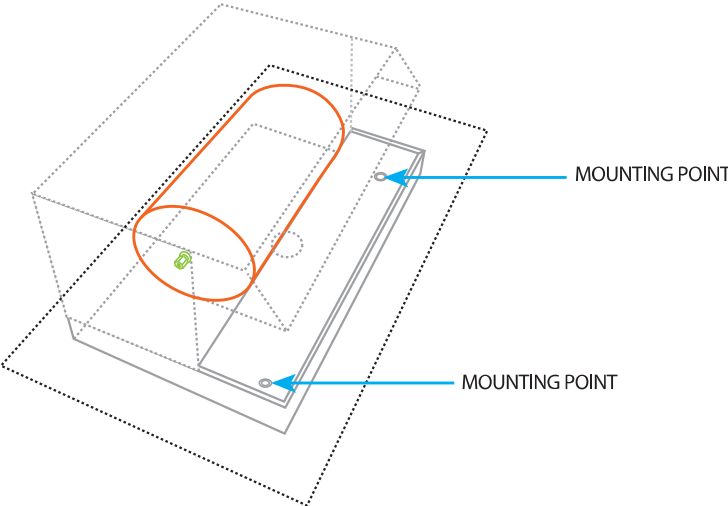


- 1. Coffee machine
- 2. Grinder
- 3. Knock-out drawer
- 4. 12v battery (mobile installations only)
- 5. DC-AC Power inverter (mobile installations only)
- 6. Gas bottle -butane or propane (mobile installations only)
- 7. Pressure regulator (28mBar - Butane, 37mBar -Propane)
- 8. High pressure gas hose
- 9. 1/4" BSP Fulham nozzle
- 10. Fresh water tank (mobile installations only)
- 11. Bottle water pump (mobile installations only)
- 12. Water softener
- 13. High pressure water pump
- 14. Power supply for high pressure pump
- 15. 13amp power supply for coffee machine
- 16. Waste water container

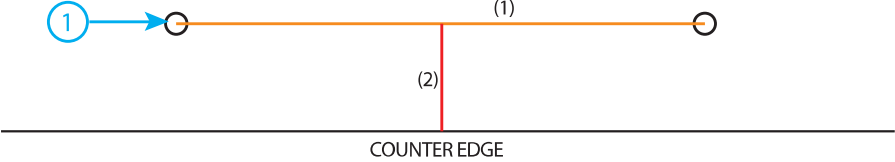
-  **Warning:** Appliance must not be installed on or against any combustable surface.
-  **Warning:** Air supply must not be blocked at any time.
-  **Warning:** Adequate clearance must be left around the appliance, as shown above.

Mounting - LPG Supplement

For mobile installation the appliance must be securely bolted to a stable counter top, there are two fixing points incorporated into the chassis of the appliances, these are located under the drip tray.

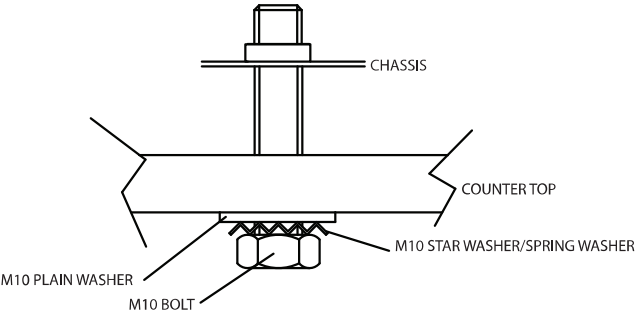


1) Drill 2 holes with a 11mm drill in positions shown below:

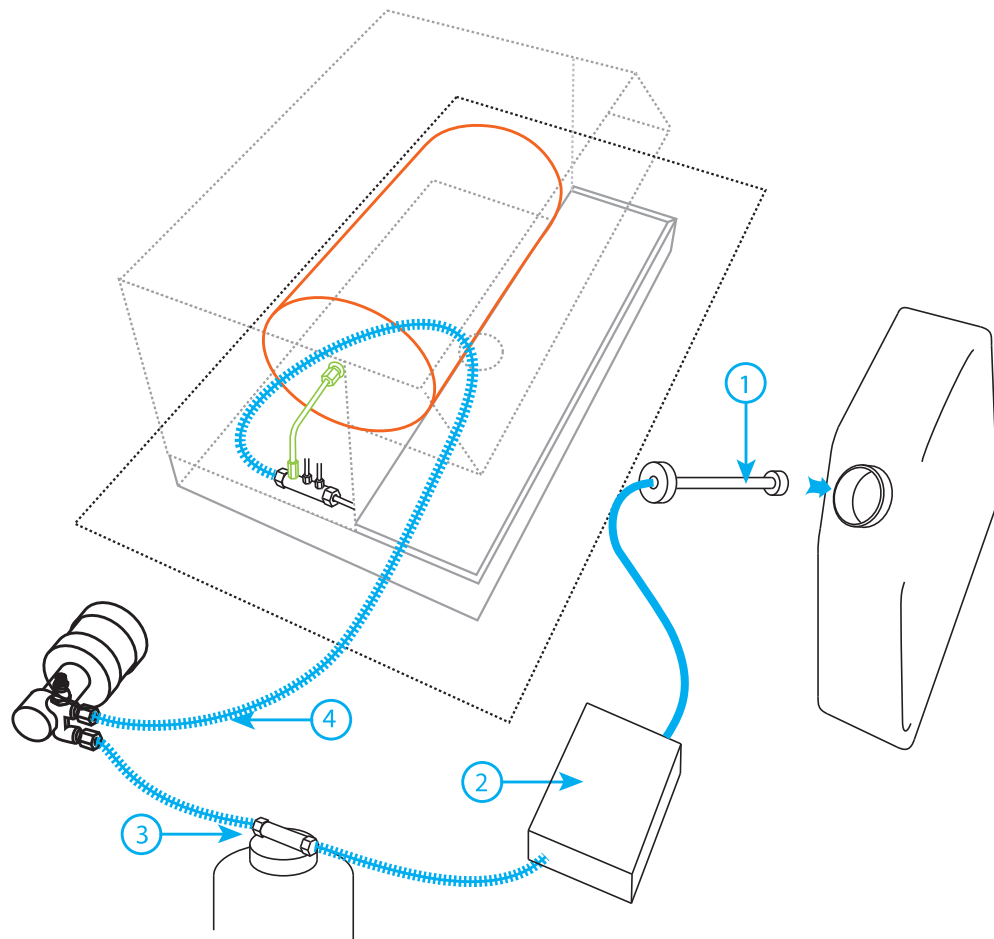


No. of Groups	Dimension (1)	Dimension (2)
1	279mm	100mm Min.
2	482mm	100mm Min.

2) Use the supplied M10 bolts to fix the appliance to the counter, it is advisable to use a star washer or spring washer to prevent vibrations loosening the bolts:



Connecting Water Supply - LPG Supplement



1) Fill the water tank with fresh water and insert the feed pipe for the water bottle pump.



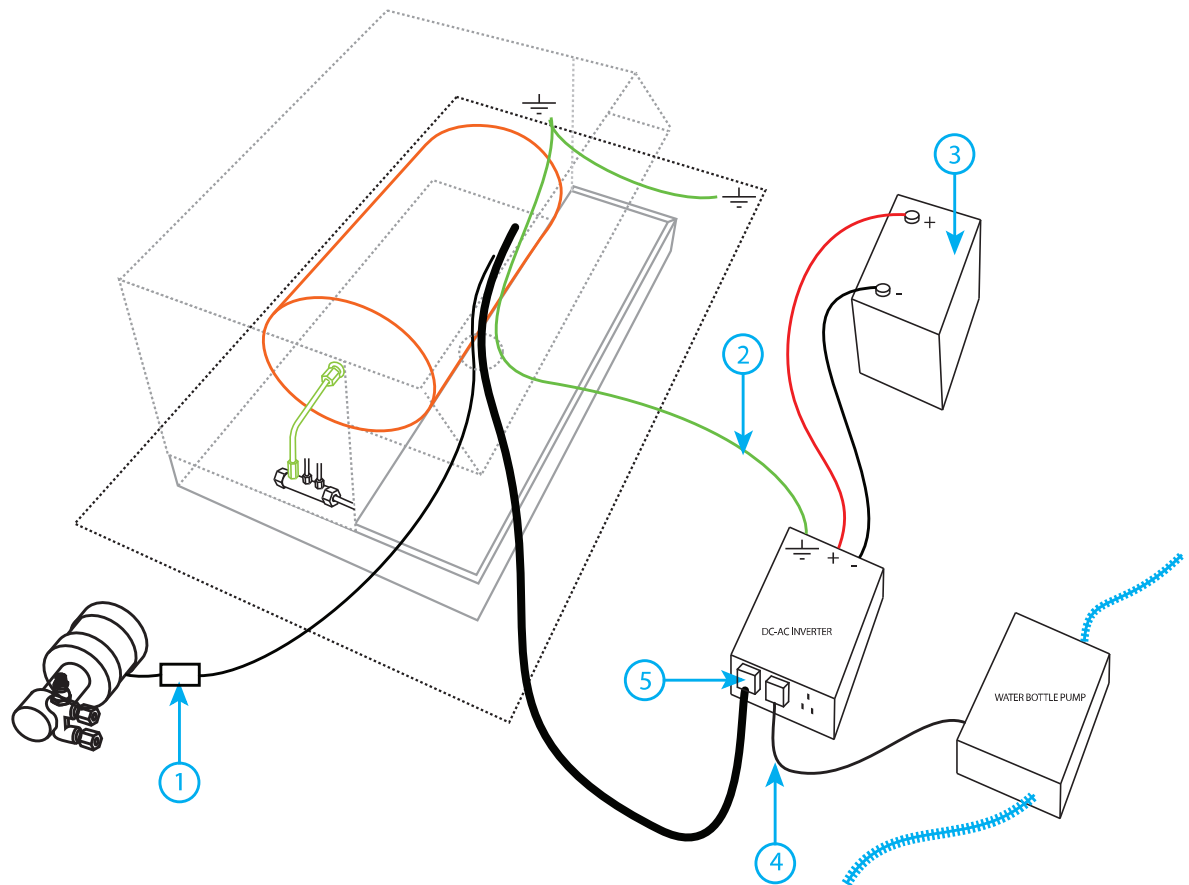
Warning: The water softener should be flushed through prior to connection with 5 x 5 gallon buckets or until the water runs clear.

2) Connect the water bottle pump to the water softener, if required.

3) Connect the water softener to the inlet side of the external pump.

4) Connect the 3/8" braided hose from the machine to the outlet side of the pump fitted - ensuring a non-return valve is fitted

Connecting Power Supply - LPG Supplement



1) Take the thin 3-core cable from the coffee machine and connect to the external pump.

2) Connect an earth lead from the inverter to the coffee machine

* Ensure the coffee machine has an earth connection to the vehicle chassis/body - this can be done via the mounting bolts or a separate earth lead.

3) Connect the 12V battery to the DC-AC inverter - check polarity and ensure the inverter is earthed to the coffee machine.

4) Take the 13amp plug from the water bottle pump and plug in to the inverter

5) Plug the coffee machine in to the inverter.